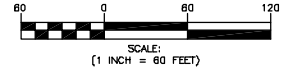


**EAGLES NEST CONDOMINIUMS**  
 A CONDOMINIUM SUBDIVISION IN A PORTION OF  
 SECTION 14, TOWNSHIP 26 SOUTH, RANGE 19 EAST  
 PASCO COUNTY, FLORIDA

PLAT BOOK \_\_\_\_\_  
 PAGE \_\_\_\_\_

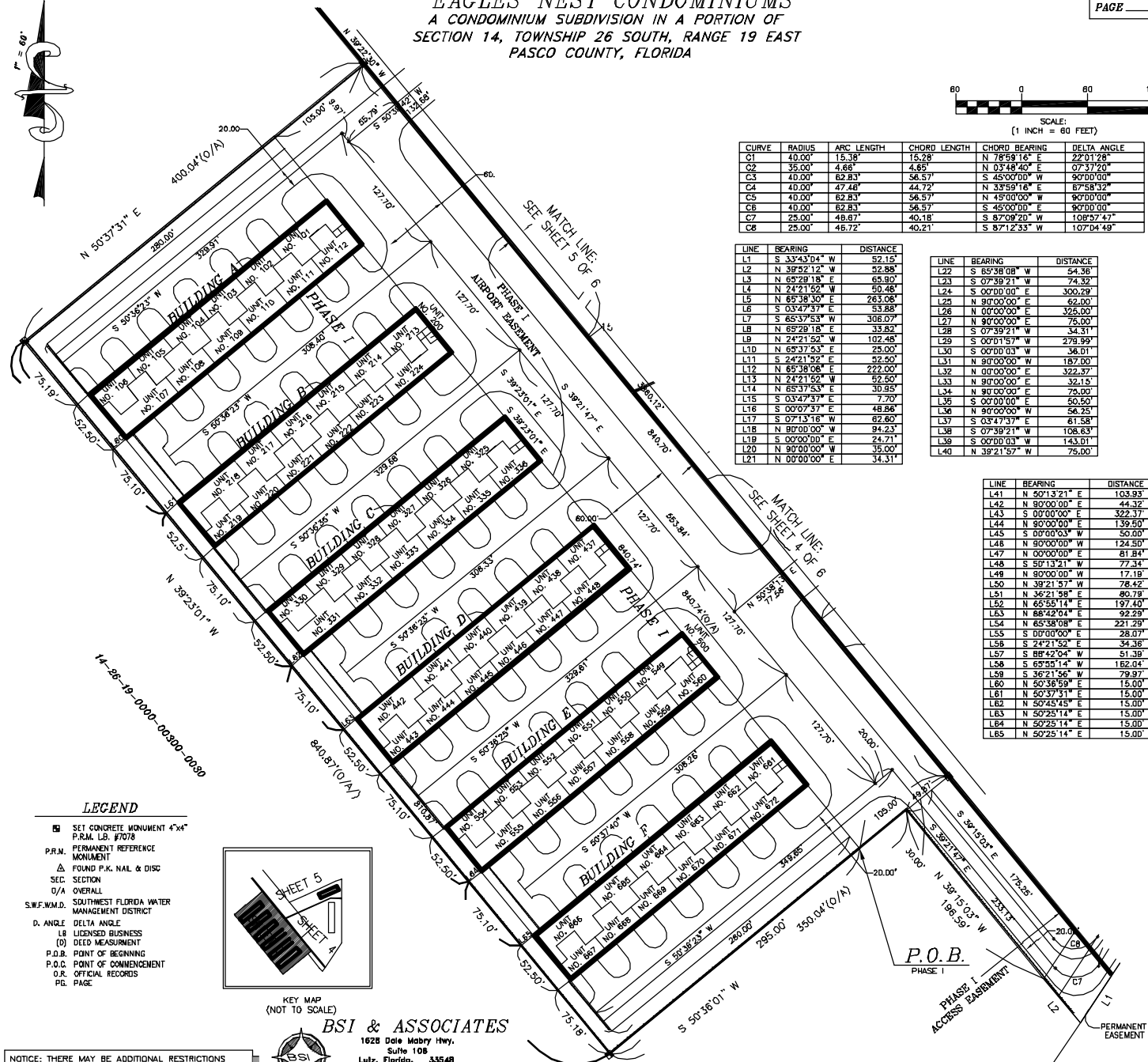


CURVE	RADIUS	ARC LENGTH	CHORD LENGTH	CHORD BEARING	DELTA ANGLE
C1	40.00'	15.38'	15.28'	N 78°59'16" E	22°01'28"
C2	35.00'	4.66'	4.65'	N 03°48'40" E	03°37'53"
C3	40.00'	62.83'	56.57'	S 45°00'00" W	90°00'00"
C4	40.00'	47.48'	44.72'	N 33°59'16" E	67°58'32"
C5	40.00'	62.83'	56.57'	N 45°00'00" W	90°00'00"
C6	40.00'	62.83'	56.57'	S 45°00'00" E	90°00'00"
C7	25.00'	48.67'	40.18'	S 87°09'20" W	108°37'47"
C8	25.00'	45.72'	40.21'	S 87°12'53" W	107°04'49"

LINE	BEARING	DISTANCE
L1	S 33°43'04" W	52.15'
L2	N 89°52'12" W	52.88'
L3	N 65°39'18" E	65.50'
L4	N 24°21'52" W	50.48'
L5	N 85°38'30" E	263.08'
L6	S 03°47'37" E	53.88'
L7	S 65°37'53" W	306.07'
L8	N 65°29'18" E	33.82'
L9	N 24°21'52" W	102.48'
L10	N 65°37'53" E	25.00'
L11	S 24°21'52" E	42.60'
L12	N 65°38'08" E	222.00'
L13	N 24°21'52" W	62.50'
L14	N 85°37'53" E	38.95'
L15	S 03°47'37" E	7.70'
L16	S 00°07'37" E	48.86'
L17	S 07°13'18" W	62.60'
L18	N 80°00'00" W	94.23'
L19	S 00°00'00" E	24.71'
L20	N 80°00'00" W	35.00'
L21	N 00°00'00" E	34.31'

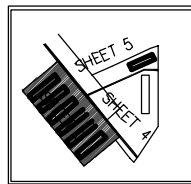
LINE	BEARING	DISTANCE
L22	S 65°38'08" W	54.36'
L23	S 07°38'21" W	74.32'
L24	S 00°00'00" E	300.29'
L25	N 90°00'00" E	62.00'
L26	N 00°00'00" E	325.00'
L27	N 90°00'00" E	75.00'
L28	S 07°39'21" W	34.31'
L29	S 00°01'57" W	278.99'
L30	S 00°00'03" W	36.01'
L31	N 90°00'00" W	187.00'
L32	N 00°00'00" E	322.37'
L33	N 90°00'00" E	32.15'
L34	N 90°00'00" E	75.00'
L35	S 00°00'00" E	60.50'
L36	N 90°00'00" W	56.25'
L37	S 03°47'37" E	61.58'
L38	S 07°39'21" W	108.83'
L39	S 00°00'03" W	143.01'
L40	N 39°21'57" W	75.00'

LINE	BEARING	DISTANCE
L41	N 50°13'21" E	103.93'
L42	N 90°00'00" E	44.32'
L43	S 00°00'00" E	322.37'
L44	N 80°00'00" E	139.50'
L45	S 00°00'03" W	50.00'
L46	N 90°00'00" W	124.50'
L47	N 00°00'00" E	81.84'
L48	S 50°13'21" W	77.34'
L49	N 90°00'00" W	17.19'
L50	N 39°21'57" W	78.42'
L51	N 36°21'58" W	86.78'
L52	N 65°55'14" W	197.40'
L53	N 88°42'04" E	92.29'
L54	N 65°38'08" E	221.29'
L55	S 00°00'00" E	28.07'
L56	S 24°21'52" E	34.36'
L57	S 88°42'04" W	51.38'
L58	S 65°55'14" W	162.04'
L59	S 36°21'57" W	79.97'
L60	N 60°36'59" W	15.00'
L61	N 50°37'51" E	15.00'
L62	N 50°45'45" E	15.00'
L63	N 50°25'14" E	15.00'
L64	N 50°25'14" E	15.00'
L65	N 50°25'14" E	15.00'



**LEGEND**

- SET CONCRETE MONUMENT 4"x4" P.K.M. LB. 6708
- P.R.M. PERMANENT REFERENCE MONUMENT
- △ FOUND P.K. NAL & DISC
- SEC. SECTION
- O/A OVERALL
- S.W.F.W.M.D. SOUTHWEST FLORIDA WATER MANAGEMENT DISTRICT
- D. ANGLE DELTA ANGLE
- LB LICENSED BUSINESS
- (D) DEED MEASUREMENT
- P.O.B. POINT OF BEGINNING
- P.O.C. POINT OF COMMENCEMENT
- O.R. OFFICIAL RECORDS
- PG. PAGE



KEY MAP (NOT TO SCALE)

**BSI & ASSOCIATES**

1628 Dale Mabry Hwy.  
 Suite 108  
 Lutz, Florida, 33548  
 Ph. (813) 948-8020  
 Email: bsi@bsi-surveys.com  
 FAX (813) 948-6877

NOTICE: THERE MAY BE ADDITIONAL RESTRICTIONS THAT ARE NOT RECORDED ON THIS PLAT THAT MAY BE FOUND IN THE PUBLIC RECORDS OF THIS COUNTY.

\* SEE BUILDING DETAIL ON SHEET 6 OF 6 \*